

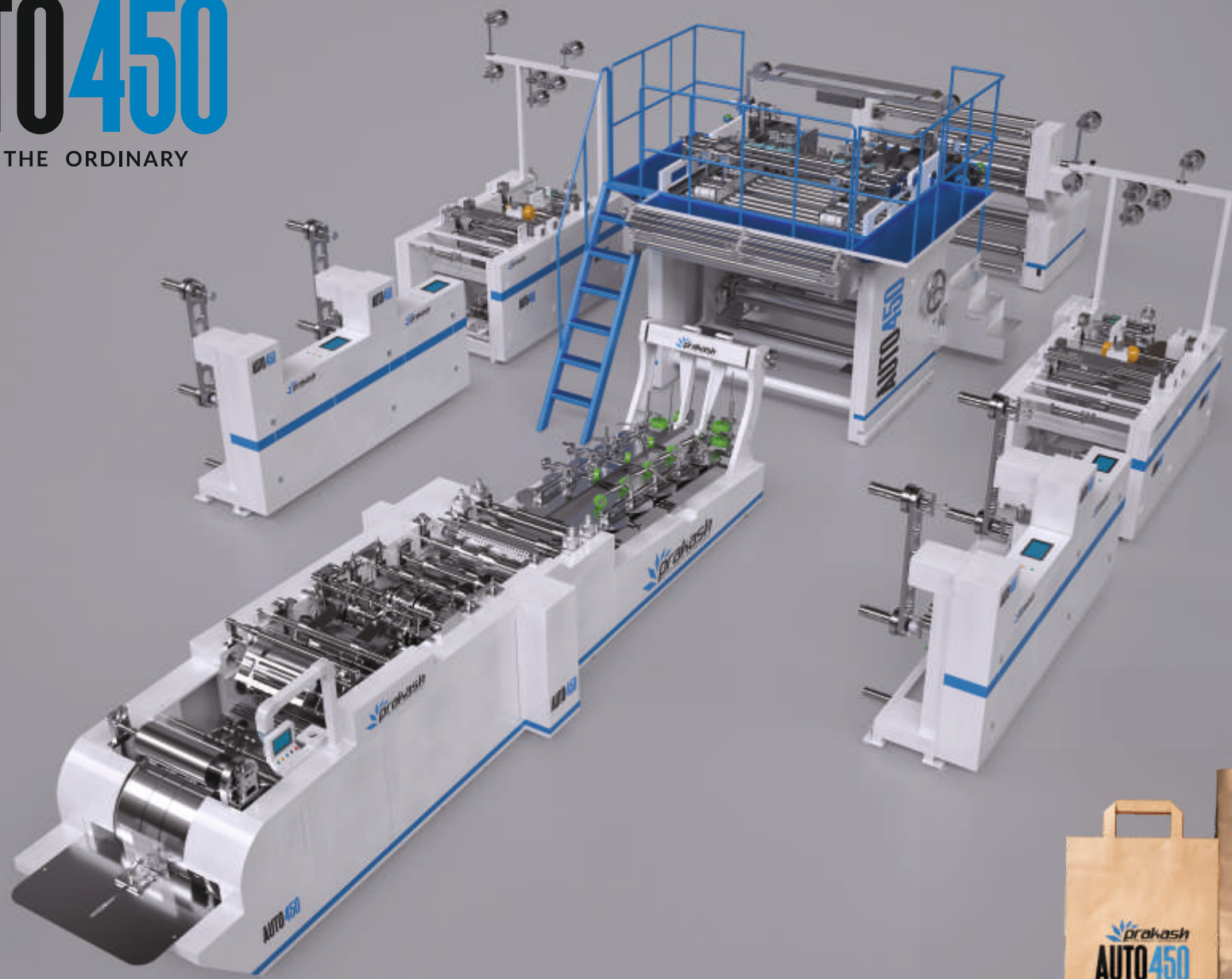


AUTO 450

Fully Automatic Roll Fed Square Bottom Paper Bag
With Twisted Rope & Flat Handle Machine

AUTO450

ESCAPE THE ORDINARY



Fully automatic roll fed square bottom paper bag with twisted rope & Flat handle making machine

This is a special machine for the production of shopping bags (block bottom bags) with twisted rope handles or flat belt handles made of paper. The material can be paper roll or printed paper roll. Whole machine is controlled by a computer central control system with touch screen and servo motor for cut-off length control. It can produce variable size paper bags and paste paper handles inline for complete paper bags ready for market without any manual process. The machine automatically feeds paper from roll, tube forming, cut-off, bottom forming, bottom glue, bag forming and final bag output. All steps are completed in-line; This machine is ideal equipment for Twisted or Flat handle square bottom paper bags.

FEATURES

Dual mould technology	Hot & cold glueing options	Fully servo control
Automatic tension control & web guide	Production management system	Colour mark tracking system
PLC & Touch screen	Fully internet enabled	

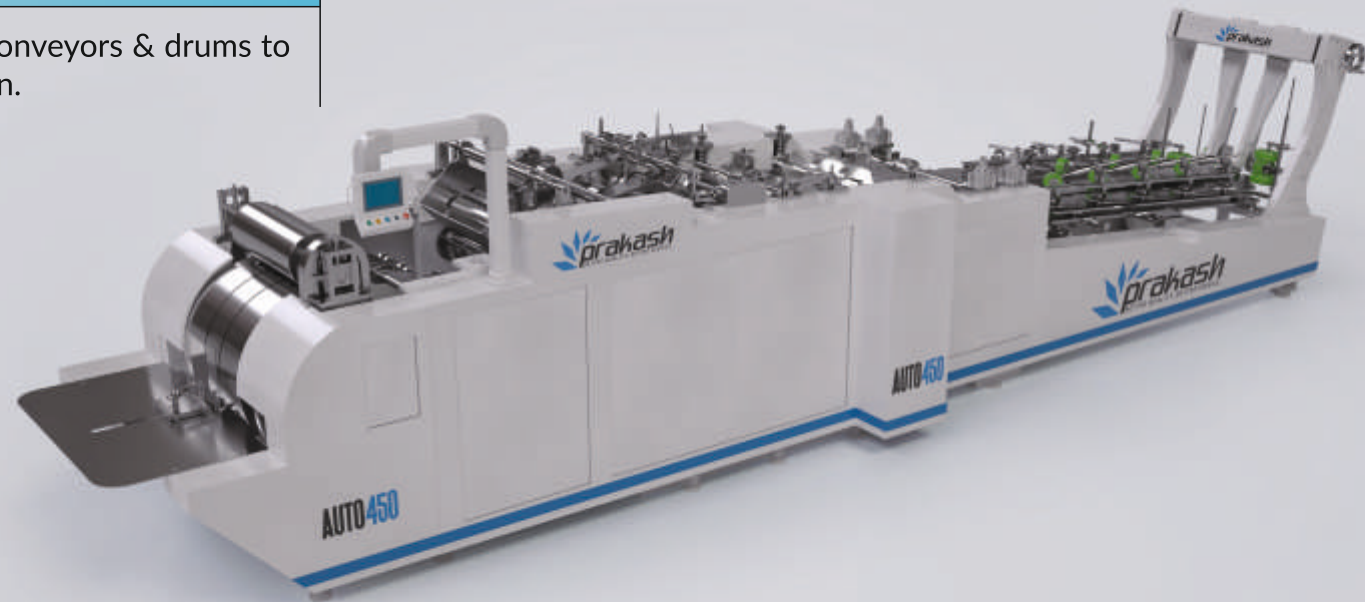
Technical Parameter ■

MODEL	AUTO 360	AUTO 450	AUTO 550
Paper Roll Width	450-1150mm	650-1390 mm	670-1690mm
Paper Bag Width	135/180-360 mm	230-450 mm	240-550 mm
Bottom Size	80-200mm	80-230 mm	80-280 mm
Bag Cutting Length	270-530mm with handle height	270-630mm with handle height	380-780mm with handle height
Thickness of Paper	65-150gsm	70-170gsm	90-150 gsm 80-170 gsm
Handle Height	90-120 mm	90-120 mm	90-120 mm
Diameter of Core	76mm	76 mm	76 mm
Length of twisted rope customizable	145-165 mm	155-175 mm	155-175 mm
Diameter of Twisted Rope	3-6 mm	3-6 mm	3-6 mm
Handle Patch Length	150 mm	190mm	190 mm
Handle Patch Width	35-50 mm	35-50 mm	35-50 mm
Handle patch Roll Diameter	1000 mm	1000 mm	1000 mm
Paper Patch Roll Width	70-100 mm	70-100 mm	70-100 mm
Paper GSM for Handle patch	80-150gsm	80-150 gsm	80-150 gsm
Max. Speed	100-150 Bags/min	100-150 Bags/min	100-150 Bags/min
Power	30 KW	33 KW	42 KW
Weight	18000 KG	21000 KG	23000 KG
Machine Dimension (L*W*H)	13500 x 5700 x 2500	14500 x 5800 x 2500	15500 x 6200 x 2500

Bag Making Section

The bag making section in a fully automatic square bottom paper bag making machine comes with several features that make it an efficient and reliable component. Some of the key features of the bag making section are:

TUBE FORMATION	BAG CUTTING SYSTEM
The bag tube forming system in the bag making section folds the paper web into a tube and secures it with glue, creating the foundation for the bags.	The bag cutting system in the bag making section cuts the paper tube into individual bags at the desired length, ensuring that the bags are of the correct size.
BOTTOM CLOSING	BOTTOM GLUING
Once all above processes are complete, machine then closes the bottom to make final bag.	Once the square bottom is formed & opened next step is to apply glue at the bottom so that bottom can be sealed.
DELIVERY	
Final bag is conveyed through the conveyors & drums to the final delivery section for collection.	



Handle Pasting Unit

Driven by 4 servo motors, A handle pasting unit is an essential component in a fully automatic square bottom paper bag making machine. This unit is responsible for attaching handles to the paper bags that are being produced. The handle pasting unit in a fully automatic square bottom paper bag making machine comes with several features that make it an efficient and reliable component. Some of the key features of a handle pasting unit are:

PRE-PERFORATION

Servo motor, does the perforation at the exact point where the handle rope will come. This ensure that at the final bag cutting, handle rope is not cut.

GLUE DISPENSING SYSTEM

The handle pasting unit has a servo driven glue dispensing system that dispenses the required amount of cold glue accurately and consistently, ensuring that the handles are firmly attached to the paper bags.

HANDLE FEEDING SYSTEM

The handle feeding system in the handle pasting unit is designed to feed the handles into the machine consistently and accurately. This feature ensures that the handles are positioned correctly on the paper bags.

PRECISE POSITIONING

The handle pasting unit is designed to position the handles precisely onto the paper bags. This feature ensures that the handles are attached at the right spot, making the bags more comfortable to carry.

HIGH-SPEED OPERATION

The handle pasting unit operates at high speeds, ensuring that the paper bags are produced at a fast rate without compromising on quality.

EASY MAINTENANCE

The handle pasting unit is designed to be easy to maintain, with easy-to-access parts that can be easily replaced when needed.



Roll Stand

HYDRAULIC ROLL LIFTING

This helps in lifting heavy rolls with ease. Single person can load the roll in the machine with push of a button.

CLOSE LOOP TENSION CONTROL

Machine is equipped with close loop load cell based pneumatic tension control. Operator can digitally set the tension and the system with its disc brake, maintains that tension.

INFEEED SYSTEM

Servo driven infeed system is given for precise control over the paper. This helps in accurate tension control so that all the further processes in the machine are also controlled with same accuracy.

AIR SHAFT

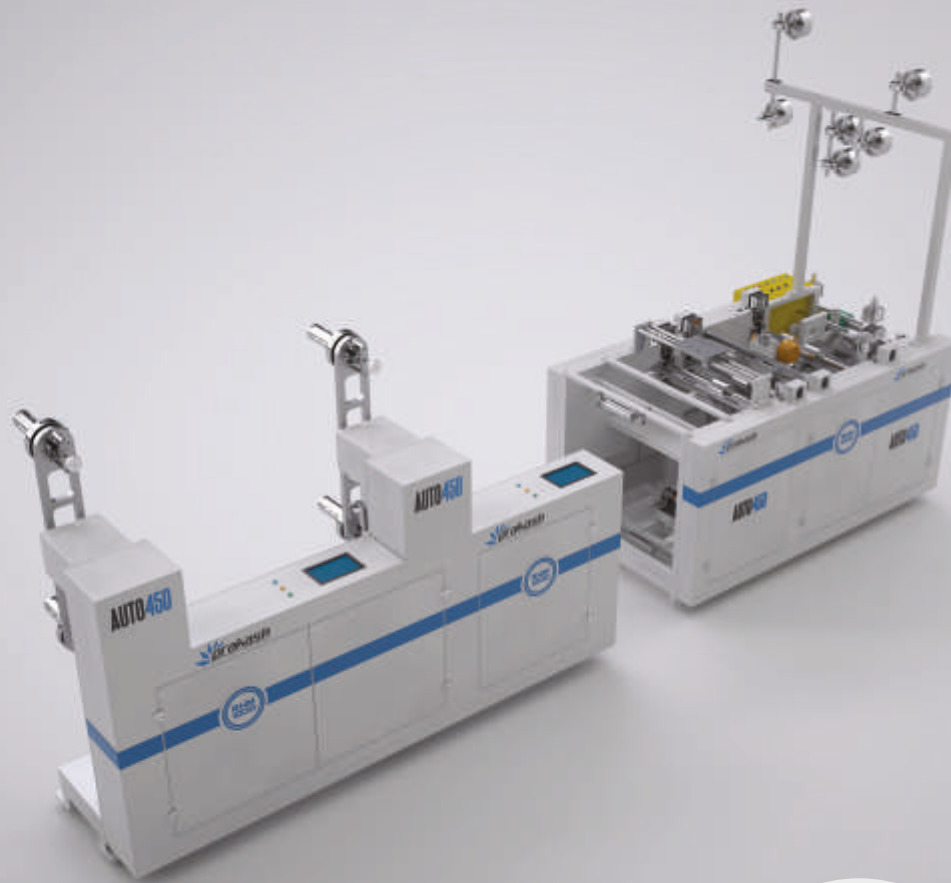
For quick roll changeover, air shaft is provided. With its air inflated lugs, shaft holds the paper core with ease and in quickly.

ULTRASONIC WEB GUIDE

This system helps keep the paper in center using an automatic ultrasonic sensor. Controller continuously monitors the position of paper and keeps on adjusting the assembly as per requirement.



Machine has a special roll stand, which has lot of features. All these features make the work of operator easier and efficient.



Technical Parameter

PARAMETERS	SPECIFICATIONS
Rope Height (A)	105-155mm
Patch Width (B)	35-55mm
Patch Length (C)	152/190mm
Rope Spacing (D)	76/95mm
Maximum paper roll diameter	1000mm
Paper roll core diameter	76mm
Speed	200 pairs / minute
Power	3.5 KW
Glueing System	Hot/Cold
Machine Weight	3000 kgs
Patch Thickness	100-120 GSM



High Speed Twisted Rope Handle Making Machine

This machine mainly supports semi-automatic paper bag machines. It can quickly produce paper handles with twisted rope which can be attached onto the paper bag without handles in further production and make it into paper handbags. This machine takes two narrow paper rolls and one paper rope as raw material sticks paper belts and paper rope together which will be cut off gradually to form paper handles. In addition, the machine also has automatic counting and glueing functions which can greatly improve the efficiency of subsequent processing operations of users.



Technical Parameter

PARAMETERS	TRM-1500	TRM-2500
Station	Single Station	Double Station
Paper roll width	30-100mm	30-100mm
Rope Diameter	2-4mm	2-4mm
Speed	10-30 m/min	10-30 m/min
Coiled Rope roll diameter	400mm	400mm
Coiled Rope roll width	400mm	400mm
Paper thickness	25-60 gsm	25-60 gsm
Weight	250 kgs	500 kgs
Power Consumption	1.1 kw	2 kw
Dimensions	1000x1000x1300	2200x1200x1300mm

TRM2500

TWISTED PAPER ROPE MAKING MACHINE

Prakash TRM-500 is designed to make twisted paper rope. Twisted paper ropes are widely used to make handles for shopping bags. It's a high speed and high production twisted paper rope machine. Fully automatic and requires less manpower to operate. Paper roll of desired width is put at one end and at the other end re-winded twisted paper rope is made using a fast rotating shaft and keep the twisted rope into roll form. You can make 2 twisted rope rolls in a double station machine.



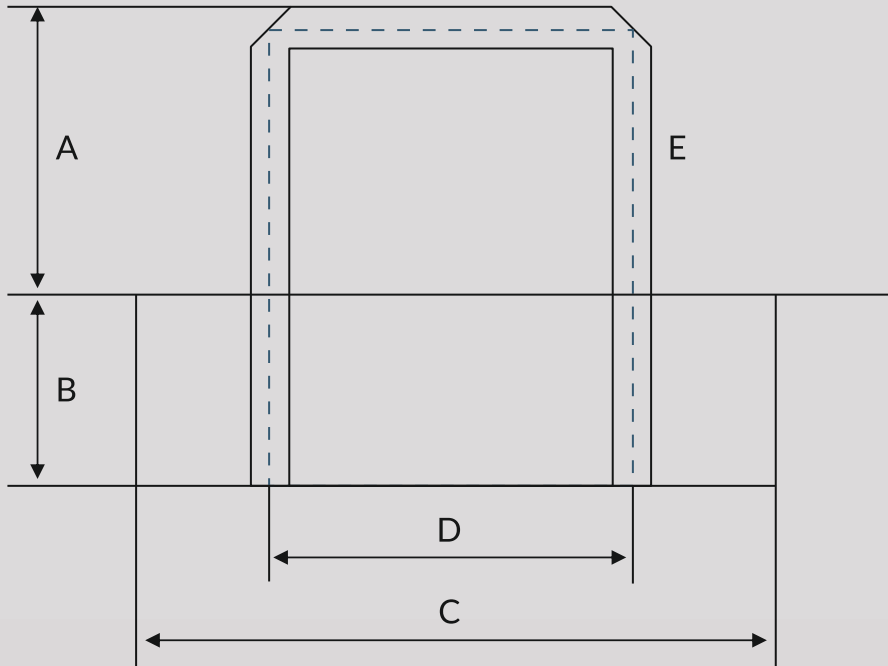
Technical Parameter

PARAMETERS	RR700
Core diameter of raw rope roll	90mm
Core diameter of final rope roll	160mm
Final rope reel diameter	90-600mm
Max. production speed	200 meters/min
Power requirement	380V, 50 Hz, 3phase
Power	2.2 KW
Weight	Approx. 120 kgs
Dimensions	L1050MM X W 800MM X H 1200MM

RR700

PAPER ROPE REWINDING MACHINE

This machine mainly supports semi automatic paper bag machines. It can quickly produce paper handles with twisted rope which can be attached onto the paper bag without handles in further production and make it into paper handbags. This machine takes two narrow paper rolls and one paper rope as raw material sticks paper belts and paper rope together which will be cut off gradually to form paper handles. In addition, the machine also has automatic counting and gluing functions which can greatly improve the efficiency of subsequent processing operations of users.



FHM1000

FLAT BELT PAPER HANDLE MAKING MACHINE

1	Handle length (A)	105mm
2	Handle Patch width (B)	35-55mm
3	Flat Patch length (C)	190- 204mm
4	Flat Rope Spacing (D)	96mm
5	Paper GSM	100-120g/m ²
6	Flat Rope Width (E)	15-18mm
7	Maximum Speed	100-150 pairs per minute
8	Total Power (kw)	8KW
9	Machine Weight (Ton)	4 T
10	Machine Dimension (L*W*H)	5000*1800*1800mm
11	Paper Roll Core Diameter	76mm





PRAKASH WEB OFFSET PVT. LTD.

Plot no. 268,269,270 Sector 58, Faridabad-121004
Haryana, India.

WRITE US

info@prakashoffset.com

24 X 7 HELP LINE

+91 82875 55666, 98112 91061



[https://www.youtube.com/c/
PrakashOffset/videos](https://www.youtube.com/c/PrakashOffset/videos)

www.prakashoffset.com